



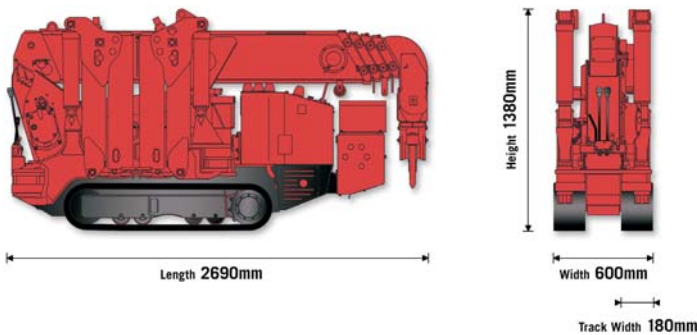
UNIC MINI CRANE

ESG have introduced an additional complementary service to provide customers with even greater support. The Crane Hire service enables customers to buy very large and heavy panels of glass from us as usual and we can then also offer to unload at site and for shop fronts especially even help them glaze the glass. However, it is important to note that this is an additional service so they do not have to buy the glass from us.

For many customers this will take away some of the organisational headaches associated with coordinating the glass supply, unloading at site and glazing large and heavy panels as this can now be done through one point of contact at ESG.

Key Features of the service are as follows:

- The crane is available for hire on a daily, weekly or long term basis. For jobs lasting more than one day customers can store the crane on site (subject to the Terms and Conditions of our Hire Agreement)
- We will deliver the mobile crane to the customer's site and provide a trained operator who will work with the customers 'Appointed Person' (we do not hire the crane without our own operator)
- Our standard delivery area covers London and the Home Counties but we do offer nationwide coverage
- The crane is dual powered so customers can use petrol when glazing outside and LPG when inside
- The crane and equipment we provide will be properly maintained, tested and certified
- We will also supply a vacuum suction lifter with powered tilt and rotate rated to lift up to 600kg. For lifts above this weight customers can provide their own lifting device for lifts up to 995kg
- We will hire the crane under our standard 'Crane Hire Agreement' in accordance with the 'Safe Use Of Cranes :BS7121'. We do not offer a 'Contract Lift' service



Mobile flexibility

At 0.6m wide, the UNIC 095 mini crane is specifically designed for interior access and yet benefits from class-leading lifting capacity. The 095 boasts unrivalled boom length and its outriggers allow for independent, multi-angle configurations to suit the working space.

KEY FEATURES

- Maximum lifting capacity using vacuum suction lift supplied is 600 kg
- Total width 0.6m
- Max working radius 8.41m
- Max boom length 8.65m
- Petrol powered for work outside and LPG for work inside
- Multi-position configurable outriggers
- Intelligent voice warning system
- Overload warning device senses outrigger displacement
- Radio remote control as standard
- eco Intelligent throttle activation for economy and ecology

Vacuum Suction Lifter Supplied

The Hydraulica is an adaptable ten pad lifter that comes with two extension arms as standard offering additional stabilisation for longer loads. Powered tilting between upright and flat is also standard and this model also benefits from 360 degree powered rotation. The fully featured Hydraulica includes a cable remote control for suction application/release and tilting. This version has a capacity of 600kg.



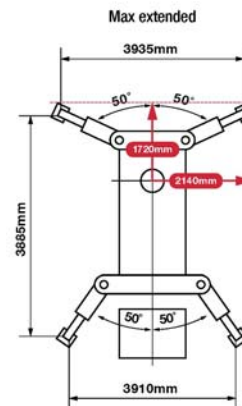
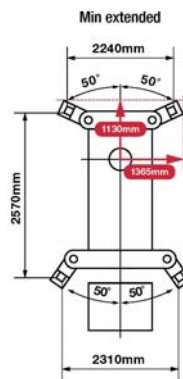
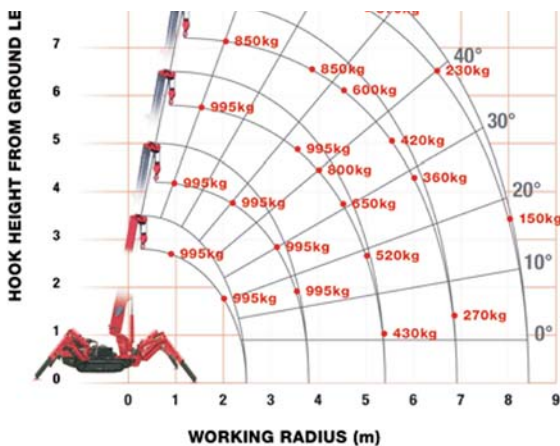
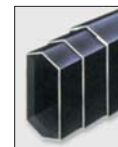
Essex Safety Glass Ltd., Unit 1-3 Moss Road, Witham, Essex CM8 3UQ

Tel: 01376 520061 (10 Lines), Fax: 01376 521176, Email: sales@esguk.co.uk, Web: www.esguk.co.uk

Technical Specification



Crane capacity	capacity:	0.995t x 3.5m
Max working radius	max:	8.41m
Max lifting height	approx:	8.8m
Rope length	max:	11.7m (4 fall), 23.4m (2 fall), 46.8m (1 fall)
Dimensions		folded: 2690mm x 600mm (w) x 1380mm (h)
Weight	unladen:	1850kg
Point loadings		Due to the many variables involved, point loadings are only available on request
Hook speed	approx:	10m/min (with 4 layers and 4 falls)
Telescopic system	boom length: telescoping speed: boom type:	2.53 - 8.65m 6.12m/20 seconds 5 section hydraulically telescoping boom, hexagonal box construction
Derricking angle/speed	approx:	0 - 78°/11 seconds
Slewing angle/speed	approx:	360° (continuous) 1.5min ⁻¹ (rpm)
Traction system	drive: travel speed: gradability: track ground length: track ground pressure: track width:	hydrostatic, step-less forward and reverse 0 - 2.3km/h 20° 1050mm 48kPa (0.49kg/cm ²) 180mm
Engine	manufacturer: fuel: maximum output: starting method: tank capacity:	Mitsubishi (Kubota diesel) petrol (LPG dual, electric dual and diesel) 9.6kW (13PS) / 2500min ⁻¹ (rpm) electric and recoil start as standard 6 litres
Electric motor	power: voltage:	3.7kW 400v AC 50/60Hz



STAGE	BOOM LENGTH	Working radius	Outrigger	1.0	1.4	1.5	1.8	2.0	2.5	3.0	3.5	3.835
SECOND STAGE	SECOND STAGE EXTENDED 2.53 - 4.075M BOOM LENGTH	Max-extended	kg	995	995	995	995	995	995	995	995	900
		Min-extended	kg	995	995	995	995	995	650	490	350	250
THIRD STAGE	THIRD STAGE EXTENDED 4.075 - 5.61M BOOM LENGTH	Max-extended	kg	995	995	995	995	995	800	650	520	430
		Min-extended	kg	800	650	530	500	380	280	220	160	120
FOURTH STAGE	FOURTH STAGE EXTENDED 5.61 - 7.13M BOOM LENGTH	Max-extended	kg	850	850	750	600	500	420	360	320	270
		Min-extended	kg	420	340	300	250	190	140	100	80	60
FIFTH STAGE	FIFTH STAGE EXTENDED 7.13 - 8.65M BOOM LENGTH	Max-extended	kg	550	550	450	370	310	270	230	200	150
		Min-extended	kg	350	290	250	200	180	130	100	70	40