



ESG **Pyrotech**[™]

Clear Fire Resistant Safety Glass

ESG **Pyrotech**[™] **630**

Timber Doorsets and Screens

FIRE CERTIFICATE SUMMARY

Single Glazed Doorset and Screen Assembly

Fire resistance: E30 / EW15

Test Institute: Chiltern International Fire

Test Number: Chilt/RF08169

Test Standards: BS EN 1634 : 2000 Pt.1
– Fire resistance tests for
door and shutter assemblies.

BS EN 1363 : 1999 Pt.1
– Fire resistance tests.

Test Result: 34 Minutes (There was no
failure of the criteria at the
time of test termination)

Certified by CERTIFIRE : CF628





ESG **Pyrotech™** 630

Single Glazed Screen and Doorset Assembly

Construction

The door leaf stiles and rails were 100 x 44mm thick Sapele with a normal density of 640 (kg/m³), and was jointed using standard mortise and tenon construction. The head, jambs, transoms and mullions for the screen frame was 90 deep x 40 thick Sapele with a density of 640 (kg/m³). The door and screen frames were glazed with ESG **Pyrotech™** 630 (6mm) Fire resistant glass supported on 13mm x 9mm glazing packers, with 1mm thick interdents fitted between the glazing packers and the glass edge. Between the the face of the glass and beading, ceramic tape 15mm x 3mm was fitted. Sapele beading 26 high x 22 deep, including a 5mm x 5mm bolection return and a 15° chamfer was used for the doorset. Sapele beading 21mm high x 22mm deep with an 18° chamfer was used for the screens. Beading was fixed using 2 x 50mm long steel pins fitted 50mm from the corners and at nominally 150mm centres.

Performance

ESG **Pyrotech™** 630: The test assembly satisfied the performance requirements specified in BS EN 1634-1 : 2000 and BS EN 1363-1 : 1999 for a period of 34 minutes.

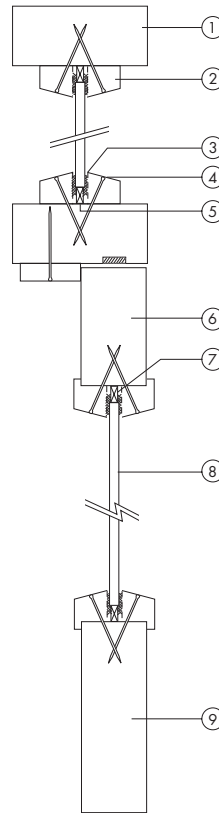
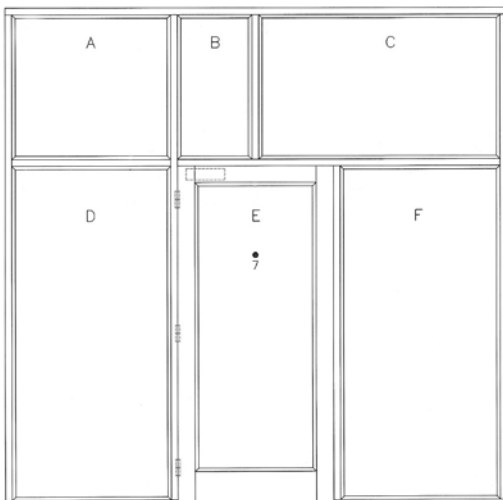
*There was no failure of criteria at the time of test termination.

Safety Rating

ESG **Pyrotech™** clear fire resistant safety glass is tested and certified as a Class 1 safety glazing material in accordance with BS EN 2150 : 2000 under the impact testing standard BS EN 12600 : 2002, and BS 6206 : 1981.

Fire Test Glass Sizes

ESG Pyrotech™ 630			
Pane A	934mm x 853mm	Pane D	934mm x 1987mm
Pane B	426mm x 853mm	Pane E (Door)	703mm x 1711mm
Pane C	1420mm x 853mm	Pane F	934mm x 1987mm



Parts list

1. Screen frame (Sapele)
2. Beading (Sapele)
3. Ceramic glazing tape 15mm x 3mm
4. Beading fixings (2 x 50mm steel pins)
5. Glazing intumescent (Dufaylite Interdens 1mm thick)
6. Top leaf rails (Sapele)
7. Glazing packers (Supalux)
8. Glazing (ESG **Pyrotech™** 630 (6mm) clear fire resistant safety glass)
9. Bottom leaf rails (Sapele)

Product Description

ESG **Pyrotech™** is a monolithic thermally toughened sheet of 6mm. The glass possesses high mechanical stability with tempered safety characteristic and is heat soaked tested to BS EN 14179 as standard.

Installation

The use of compatible panel sizes, frames and glazing methods is essential to ensure that the products perform to the tested and approved parameters of the ESG **Pyrotech™** fire test certificates. ESG **Pyrotech™** is a tempered Class 1 product and must be ordered to the exact size as it cannot be altered after manufacture. ESG **Pyrotech™** is suitable for use both internal and externally.

Frame Types

To enable ESG **Pyrotech™** to be easily used by a wide range of frame manufacturers, the products have been approved within the CERTIFIRE scheme.

(CERTIFIRE is a strictly controlled and independently assessed approved scheme (run by Warrington Fire Research Ltd) which assesses the test evidence available for products and provides a field of application for their use.)

Site storage and handling

Care should be taken to avoid damage to the edges of the glass when handling ESG **Pyrotech™**. The glass edges should be supported on timber blocks or other non-abrasive materials and stacked upright.

Maintenance

ESG **Pyrotech™** glass requires no special maintenance procedures. Once installed the glass should be cleaned regularly using warm water and a liquid detergent, washed down with clean water. Damaged or broken panels should be replaced, as this could affect the fire performance capabilities of the product.

For further information please call or email ESG using the contact details below.