



ESG Visionary – Polyvision™ Glass

From ESG, one of the UK's leading independent manufacturers of architectural, safety and technical glass, comes an innovative range of visionary glass products. Using its tried and tested Tufflam laminated glass, ESG has combined safety and beauty to make a creative portfolio for both the architectural and designer markets.

Combining Polytron's technically advanced film products with ESG's manufacturing expertise, ESG is now able to incorporate the full range of Polytron's products into bespoke panels manufactured in the UK; and available for distribution countrywide.

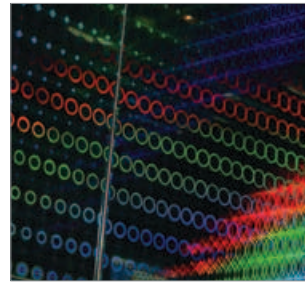
ESG Visionary – Polymagic™ LED Glass

Developed by ESG using a special patented technology this creative product incorporates LEDs, light sources or electronic materials into glass panels to create distinctive patterns images and logos. It serves as an excellent promotional tool in creating attention-grabbing displays. The high performance LEDs provide a bright picture while conserving energy.

ESG Visionary – Polymagic™ LED Glass is available in flat or curved LED glass, to match your application, without conspicuous or distracting wires. ESG Visionary – Polymagic™ LED Glass can be used in distinctive and individual ways, allowing the architect or designer to give full reign to their imagination. The vast array of possible applications for this product include; lighting arrangements, bathrooms/shower enclosures, clinics, conference rooms, tables/benches, hurricane resistant exterior window displays, inner doors/shop windows, facades, shelf displays skylights, boutiques/speciality counter displays, and as enhancements to features such as clocks, novelty displays or consumer electronic products. ESG Visionary – Polymagic™ LED Glass is equally suitable for creating stunning design features in a domestic setting.

Specifications

- **Glass Type:** (All Laminated) Float, toughened, colour, low iron, etc. LEDs can be combined with other products: LCD Privacy, Display, Holo or Screen films
- **LED Colour:** White, Red, Blue, Green, White-yellow
Switching time: Less than 100 milliseconds
- **Optical:** Transmission higher than 80%, View angle – approx. 160°, UV protection – 99.5%
- **Electrical:** Driving voltage - 100 - 230 VAC to 3-48 VDC (VDC depends on a design); Current and power consumption – depends on the design
- **Thickness:** from 11.5 mm up to 41.50 mm
- **Size:** up to 1600 x 3810 mm



ESG Visionary – Polyholo™ Glass

This is a newly-patented technology that creates unique glass panels embedded with holographic patterns. It provides a variety of colourful, attractive and eye-catching patterns (stock patterns or custom patterns available). Applications: outer windows, conference rooms, kitchens, shop windows, reception areas, infant nurseries, room dividers, display areas, museums, and commercial shops.



Essex Safety Glass Ltd, Units 1-3 Moss Road, Witham, Essex CM8 3UQ

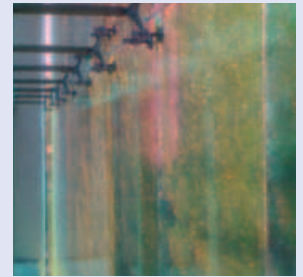
Tel: 01376 520061 Fax: 01376 521176 Web: www.esguk.co.uk Email: sales@esguk.co.uk

ESG Visionary – Polyvision™ Glass



ESG Visionary – Polyflush™ Glass

ESG Visionary – Polyflush™ Glass reveals different colours when viewed from various angles. It has no metal contaminants, no oxidation problem and provides up to 99% UV protection. This is an attractive, eye-catching material with a unique presentation facility that will enhance your most imaginative product displays. From the dark side, this glass is see-through and appears bluish purple in colour. From the bright side, a host of different colours are visible, with an attractive overall golden sheen.



ESG Visionary – Polynano™ Glass

ESG Visionary – Polynano™ Glass features a specially developed interlayer made up of individual cells that can be programmed to display alpha numerical information. This highly developed technical glass is see-through in appearance, with a monochrome output. It has a perfect flat outer screen surface and a flat rear screen to give a perfect picture on an amazingly thin panel.



ESG Visionary – Polyscreen™ Glass

ESG Visionary – Polyscreen™ Glass marks an extraordinary milestone in the versatility of transparent glass. By its very nature, if you could see through a panel of glass from many angles, you couldn't project onto it - until now. By laminating with a special projector film, ESG has created a clear glass panel, onto which advertising, logos, movies and presentations may all be projected with ease.



Width – up to 1524 mm,
Length – up to 4000 mm
View angle – 165°,
Visible-Natural Daylight – 70%
UV- Fading protection – 0.20%
Haze – 33%

Quality Standards



Toughened Glass: manufactured in accordance with the latest standard 'Glass in building – thermal toughened sodalime silicate safety glass BS EN 12150 : (Parts 1 & 2) : 2000, incorporating 'Glass in building - impact test BS EN 12600 : 2002' and 'Glass in building – four point bending test BS EN 1288-3 :2000'.

Laminating: conducted in accordance with 'Glass in building – Laminated glass and laminated safety glass – BS EN 12543 (Parts 1-6:1998 and BS EN 14449:2005). The EVA interlayer is manufactured in accordance with 'UNI EN ISO 12543-4:2000' and is certified by the manufacturer.

Safety: ESG TuffLam satisfies all safety glazing requirements of BS 6262 : Part 4 : Safety related to human impact, Regulation 14 of the Health and Safety at Work Act as well as Approved Document N of the Building Regulations. It is particularly suited to areas where enhanced performance is required.



Essex Safety Glass Ltd, Units 1-3 Moss Road, Witham, Essex CM8 3UQ

Tel: 01376 520061 Fax: 01376 521176 Web: www.esguk.co.uk Email: sales@esguk.co.uk